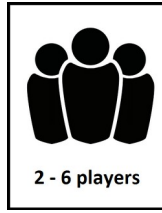


Monsters with Screws

A monster building game
made with cards and one dice
by Supersonic Snail Studio

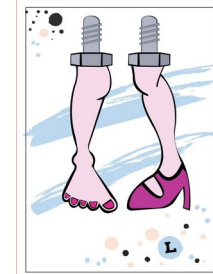
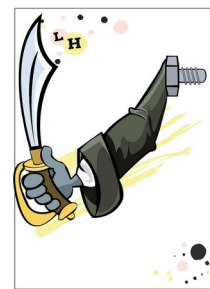
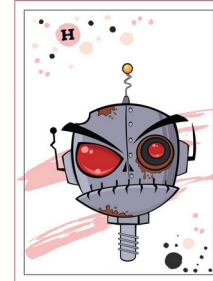


What is the big idea?

Monsters with screws is a party game about collecting and connecting cards representing different body parts to build your unique monster.

Your monster gets extra powers if you manage to use parts of the same kind and then, with such a monster you attack your opponents.

There is also a variety of additional cards which you use to interact with other players and also their monsters.



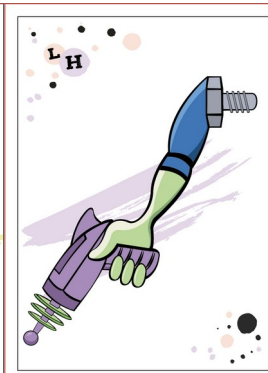
Game characteristics

Build your ultimate monster.

Develop a strategy on how to defeat your opponents.

The game is easy to understand, yet it has depth and complexity and requires strategical thinking.

There is a lot of funny interaction among the players and their monsters using variety of action cards.



Game mechanics

- players are building their own monsters, which they use to attack their opponents
- additional monster powers can be added with special cards
- interaction among players is created with a variety of action cards
- every action card needs to be activated with a dice roll
- player wins if all other opponents and their monsters are defeated



Game components

- 188 playcards
- dice for activating action cards



Who are we?

Supersonic Snail Studio is a small and independent studio based in Prague, Czech republic, Europe. Our staff has experience in creating games for different platforms, from Xbox to board games.

Contact

Tomas Pelak, tpelak@gmail.com, mussar@protonmail.com

